

Superfinish Ball Lapping Machine SLM 72 EL

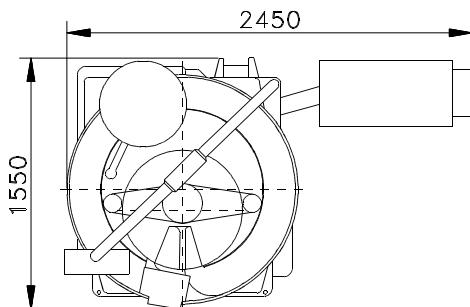


Spezial-Maschinenfabrik-Schonungen GmbH
D-97453 Schonungen

Technical data

Superfinish Ball Lapping Machine SLM 72 EL

Working range:	Smallest ball diameter	[mm]	2,5
	Largest ball diameter	[mm]	25,4
Machining pressure:	maximum	[kN]	70
Lapping precision:	Sphericity	according to ball diameter and DIN 5401	
	Surface quality (CLA)	according to ball diameter and DIN 5401	
	Load tolerance	according to ball diameter and DIN 5401	
Lapping disks:	Special cast iron, annealed		
	Outer diameter	[mm]	720
	Inner diameter	[mm]	290
	Thickness	[mm]	90
	Speeds	[min ⁻¹]	10 - 40
Standard ring magazine:	Outer diameter	[mm]	1358
	Capacity, max.	[kg]	200
	Speed range	[min ⁻¹]	0,02-0,7
Driving data:	Total power supply	[kW]	7,0
Main drive:	Power	[kW]	4,0
	Speeds	[min ⁻¹]	750
Ring magazine drive:	Power	[kW]	0,75
	Speed	[min ⁻¹]	1500
Vertical adjustment of the ring magazine:	Power	[kW]	0,55
	Speed	[min ⁻¹]	3000/200
Ball stacker (optional):	Power	[kW]	0,12
	Speed	[min ⁻¹]	3000/70
Pump for electrohydraulic adjustment of the disks, adjustment of pressure:	Power	[kW]	0,55
	Speed	[min ⁻¹]	1500
	Conveying capacity	[l/min]	3,3
<u>Two-Chamber Lapping Medium Tank</u>			
ZLB 200 (Special accessory)	Power	[kW]	1,1
Pump for lapping medium circ.:	Speed	[min ⁻¹]	3000
	Conveying capacity	[l/min]	400
	Operating pressure	[bar]	0,2
Space requirement:	Length x width x height	[mm]	2450x1550x1700
Weight:	net	[kg]	3340
	gross	[kg]	3630
Case measurements:	Length x width x height	[mm]	1870x1640x2410
	Volume	[m ³]	7,4



Construction modifications reserved



SpezialMaschinenfabrik-Schonungen-GmbH

Jahnstraße 6

D-97453 Schonungen near Schweinfurt

Telefon: +49 (9721) 750 901 -0

Telefax: +49 (9721) 750 901 -9

E-Mail: sms@sms-schonungen.de

Internet: www.sms-schonungen.de